



→ The Robust Solution

*SoftLine Express*



 **WashTec**

*Simple, robust  
technology for maximum  
vehicle throughput*



**SoftLine<sup>®</sup> Express**

SoftLine<sup>®</sup> Express combines robust simplicity and long-lasting performance for use at high conveyor speeds

- For car washes handling a very large number of vehicles
- Designed to be long-lasting, reliable and simple

- Optimised for high conveyor speeds
- Complete, modular range of aggregates
- Tried-and-tested hydraulic technology and robust stainless steel construction

## Brush station



↑ Two textile side washers and one textile roof washer are integrated in a glass bead-blasted stainless steel frame with a compact design.



↑ Contour washers at two heights for perfect cleaning of the sides of the vehicle.



↑ Contoured textile side washers for an all-round wash. Each washer moves across the centre of the bonnet to ensure optimum cleaning.

## Hydraulic technology



↑ Tried-and-tested, compact hydraulic motors for all brush drives.



↑ The number of hydraulic pumps matches the performance requirements of the drives.



↑ The hydraulic motors are integrated into the design in a simple manner that protects them from damage.

## Washing and drying



↑ Contour-tracking high pressure unit for front, side and rear washing mounted on the roof washer to save space.



↑ Four stainless steel blowers mounted on the glass bead-blasted stainless steel frame generate a powerful stream of air. Perfect for high throughput.



↑ Textile side rollers with a contoured design for effective removal of residual water droplets.

## Options



↑ Intensive wheel rim cleaning with targeted application of specialist cleaner to tackle stubborn dirt.

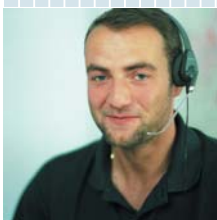


↑ Vehicle-tracking high-pressure unit for optimum cleaning of the undercarriage and the lower parts of the vehicle at the front and back.



↑ Optimum cleaning of wheels and sills thanks to vehicle-tracking high-pressure unit.

# The “World of WashTec” has everything for your success.



- **Comprehensive range:** The right solution for your washing business can always be found.
  - **Roll-over car washes** for low, medium and high washing volumes
  - **Conveyor tunnel systems** with modular design for all sizes and all requirements
  - **Commercial vehicle washes** for washing companies and in-house requirements
  - **Self-service washing equipment** with modular design for all needs and different location sizes
  - **Water treatment** – chemical-free and environmentally friendly
- **Rapid service** 250 engineers in the field throughout Germany – **always in your neighbourhood.**
- **Customized financing plans:** We will promote your business at attractive conditions.
- **Reliable experience:** Innovative car washing technology for more than 40 years. **More than 2 million cars are cleaned in WashTec washing facilities every day.**
- **Value for money services:**
  - **Site analysis** for optimum sizing of your business
  - **Cost-effectiveness calculations** help with your planning
  - **Sales training for staff** increases revenue
- **Tested quality** EN ISO 9001, 14001 certification – for your safety.